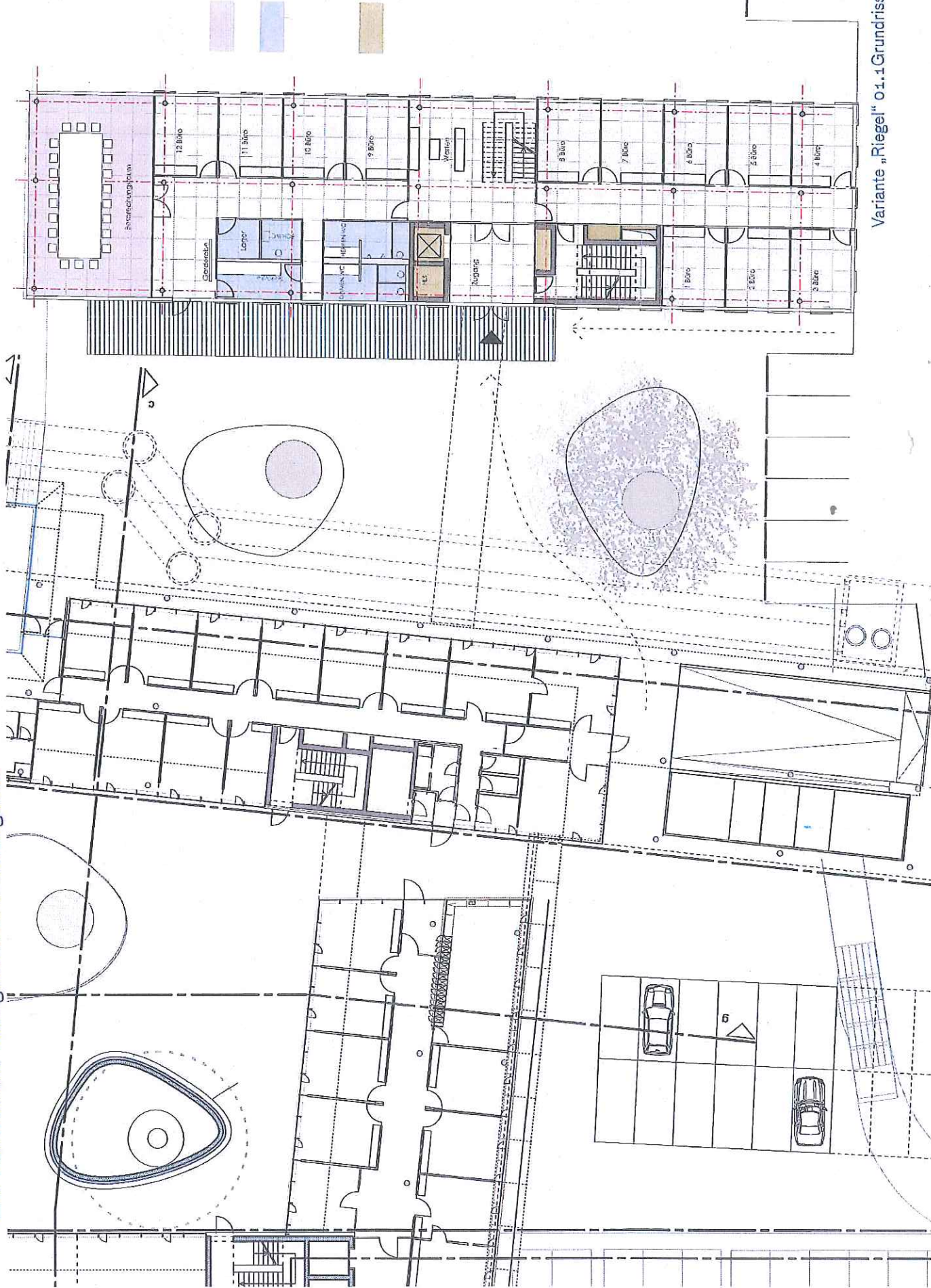


- NF1 214,9 qm
- NF2 91,3 qm
- NF3 49,3 qm
- VF 213,6 qm
- TF 13,5 qm
- KF 51,1 qm
- NGF 582,6 qm
- BGF 633,7 qm

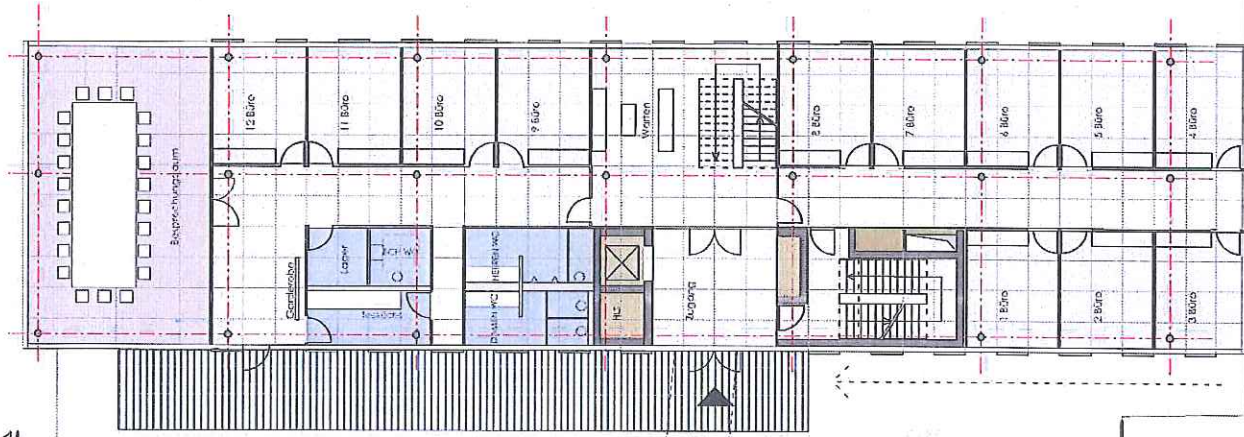
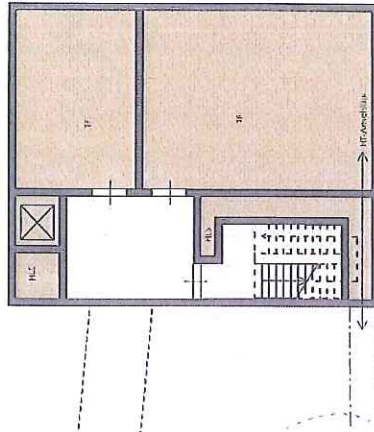


LAT Landratsamt Tübingen 2.0 Erweiterungsbau

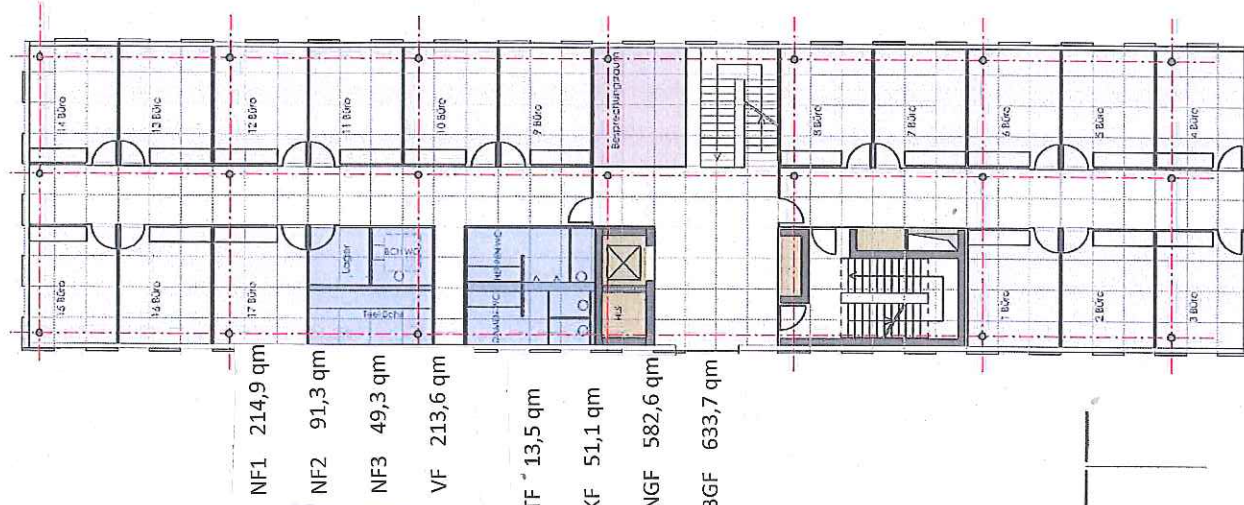


Exposit

- NF1 1126 qm
- NF2 146,8 qm
- NF3 197,2 qm
- VF 834,6 qm
- TF 176,6 qm
- KF 243 qm
- NGF 2431,2 qm
- BGF 2724,2 qm
- VF 213,6 qm
- TF 13,5 qm
- KF 28,2 qm
- BGF 189,2 qm



Grundriss EG



Grundriss 1.OG-3.OG

- NF1 303,7 qm
- NF2 19,5 qm
- NF3 49,3 qm
- VF 194,2 qm
- TF 13,5 qm
- KF 54,1 qm
- NGF 578,70 qm
- BGF 633,7 qm